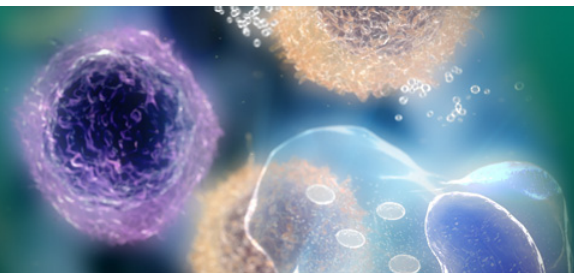


Oncology
LettersInternational
Journal
of OncologyMolecular
and Clinical
OncologyExperimental
and Therapeutic
MedicineInternational
Journal
of Molecular
MedicineBiomedical
ReportsOncology
ReportsMolecular
Medicine
Reports

International Journal of Molecular Medicine

[Journal Home](#)[Current Issue](#)[Early Online](#)[Most Read](#)[Archive](#)[Information](#)[Online Submission](#)[Information for
Authors](#)[Language Editing](#)[Information for
Reviewers](#)[Editorial Policies](#)[Editorial Academy](#)[Aims and Scope](#)[Abstracting and
Indexing](#)[Bibliographic
Information](#)[Information for
Librarians](#)[Information for
Advertisers](#)[Reprints and
permissions](#)[Contact the Editor](#)[General Information](#)[About Spandidos](#)[Conferences](#)[Job Opportunities](#)[Contact](#)[Terms and Conditions](#)

Amygdalin blocks the in vitro adhesion and invasion of renal cell carcinoma cells by an integrin-dependent mechanism

Authors: Eva Juengel, Masud Afschar, Jasmina Makarević, Jochen Rutz, Igor Tsaur, Jens Mani, Karen Nelson, Axel Haferkamp, Roman A. Blaheta

[View Affiliations](#)

Published online on: Friday, January 8, 2016

Pages: 843-850 DOI: 10.3892/ijmm.2016.2454

Abstract

Information about the natural compound amygdalin, which is employed as an antitumor agent, is sparse and thus its efficacy remains controversial. In this study, to determine whether amygdalin exerts antitumor effects on renal cell carcinoma (RCC) cells, its impact on RCC metastatic activity was investigated. The RCC cell lines, Caki-1, KTC-26 and A498, were exposed to amygdalin from apricot kernels, and adhesion to human vascular endothelium, immobilized collagen or fibronectin was investigated. The influence of amygdalin on chemotactic and invasive activity was also determined, as was the influence of amygdalin on surface and total cellular α and β integrin expression, which are involved in metastasis. We noted that amygdalin caused significant reductions in chemotactic activity, invasion and adhesion to endothelium, collagen and fibronectin. Using FACScan analysis, we noted that amygdalin also induced reductions, particularly in integrins $\alpha 5$ and $\alpha 6$, in all three cell lines. Functional blocking of $\alpha 5$ resulted in significantly diminished adhesion of KTC-26 and A498 to collagen and also in decreased chemotactic behavior in all three cell lines. Blocking $\alpha 6$ integrin significantly reduced chemotactic activity in all three cell lines. Thus, we suggest that exposing RCC cells to amygdalin inhibits metastatic spread and is associated with downregulation of $\alpha 5$ and $\alpha 6$ integrins. Therefore, we posit that amygdalin exerts antitumor activity in vitro, and this may be linked to integrin regulation.



März 2016

Volume 37 Issue 3

Print ISSN: 1107-3756

Online ISSN: 1791-244X

2014 Impact Factor: 2.088

Ranked #22/123 Medicine

Research and Experimental
(total number of cites)[Sign up for eToc alerts](#)[Recommend to Library](#)

Article Options

[Viewing Options](#)[View Abstract](#)[Full Text](#)[Purchase PDF](#)[Citations](#)[Cite This Article](#)[Cited By](#)[Related Articles](#)[on Google Scholar](#)[on Pub Med](#)[Copyright](#)[© Get Permissions](#)



Copyright © Spandidos Publications 2016. All rights reserved.

[About](#) | [Contact](#) | [Help](#) | [Cookie Policy](#) | [Privacy Policy](#)

